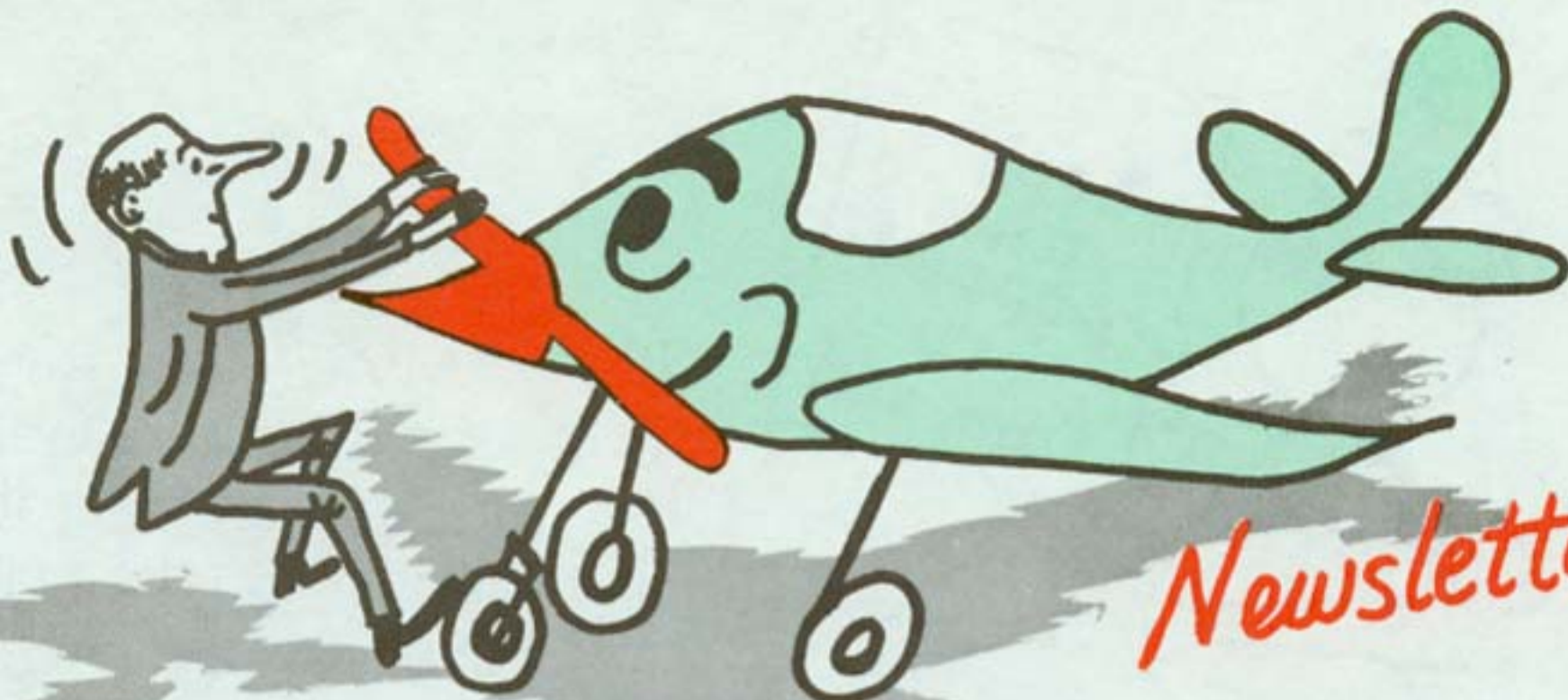


N.A.P.P.



Newsletter

VOLUME XXIX

AUGUST 1991

NO. 1

FROM THE RE-ELECTED

PRESIDENT



Right seat in a De Havilland Beaver without floats and fishing gear was unique. What a first class restoration!

The usual grand sacerdotal pilot camaraderie was present at the annual convention. Father Ray Lagesse, Linda Wehrle and helpers offered top notch programs and communications. Thanks much to them and Parks Air College.

Native Americans and the growth of the Jesuits in Missouri will henceforth take a greater share of our appreciation and admiration. The tours were quality.

Some who intended to come to Saint Louis were hindered by Mother Nature. All applaud their wise decisions. As a consolation invitation, put the DUBUQUE REGIONAL (October 7) on your calendar.

We hope the conventioners' return flights were without incident and the home folks kept the doors open. Like Fr. Ray Radzieta says ---- "the freedom is terrific."

Fraternally,

*Frank Nemmers*





The first NAPP newsletter since our July convention is now in your hands. As usual it is filled with a potpourri of interesting and exciting events in the lives of the Flying Padres.

As Frank mentions in his presidential message we were once again treated royally by our host in St. Louis. Hopefully the pictures will give those of you in absentia a taste of our experiences in the STL area. Secretary Bob Kirsch hasn't gotten the minutes of the annual meeting to me as of this writing so we will all have to struggle through another 2 months awaiting their arrival.

## ITEMS OF NOTE

1. A copy of the letter from Bill Edwards of WINGS OF HOPE acknowledging our \$1000.00 gift.
2. This item is one of those REALLY BIG ONES.

The Midwest Regional meeting will be in Dubuque, Iowa on Monday, October 7.

This event will take place on the luxurious CASINO BELLE, the 3000 passenger gambling casino boat. Our luncheon cruise departs at 10:00 AM and returns at 3:00 PM. Boarding begins as early as 9:00.

RESERVATIONS are required and can be cancelled up to 48 hours prior to departure. Obviously this trip will require a bit of prior planning and commitment.

Arrangements have been made to stay in local rectories Sunday and/or Monday night. Please send the registration form to Regional Director, Ev Hemann, as soon as your plans are formulated.

An optional excursion after the cruise is a trip to the Field of Dreams, only a short distance from Dubuque.

# WINGS OF HOPE<sup>inc</sup>

1750 South Brentwood, Ste 352  
St. Louis, Missouri 63144  
(314) 968-8833

1-800-4 HOPE 89  
FAX: (314) 961-1464

## HONORARY COUNCIL

**SANFORD N. MCDONNELL**  
Chairman, HONORARY COUNCIL  
Chairman Emeritus,  
McDonnell Douglas Corporation

**GERALD R. FORD**  
Former President,  
United States of America

**BARRY GOLDWATER**  
Former U.S. Senator from Arizona

**Reverend BILLY GRAHAM**  
Evangelist

**Bishop LEROY C. HODAPP**  
Bishop of Indiana,  
President of the Council of Bishops,  
United Methodist Church

**BOB and DOLORES HOPE**  
Entertainer, Humanitarians

**The Most Reverend JOHN L. MAY**  
Archbishop of St. Louis

**STAN MUSIAL**  
Member Baseball Hall of Fame,  
Hotelier and Humanitarian

**JOYCE S. PILLSBURY**  
Chairman of the Board,  
Missouri Baptist Hospital

**Father PAUL C. REINERT, SJ**  
Chancellor Emeritus,  
St. Louis University

**ALAN K. SIMPSON**  
U.S. Senator from Wyoming

**Lt. Gen. TOM STAFFORD**  
Former Astronaut

**Rabbi MARC H. TANNENBAUM**  
Director, International Relations,  
American Jewish Committee

**Mrs. HENRY H. TIMKEN, JR.**  
Humanitarian

**Bishop JACK M. TUELL**  
Bishop of Los Angeles,  
Past President Council of Bishops,  
United Methodist Church

**Brig. Gen. CHUCK YEAGER**  
Test Pilot, Author

July 24, 1991

National Assn. of Priest Pilots  
c/o Raymond R. Lagesse, S.J.  
Jesuit Hall  
3601 Lindell Blvd.  
St. Louis, MO 63108

Dear Fr. Lagesse,

We hereby acknowledge and thank you for your recent and generous contribution to Wings of Hope, Inc. Your check for \$1,000.

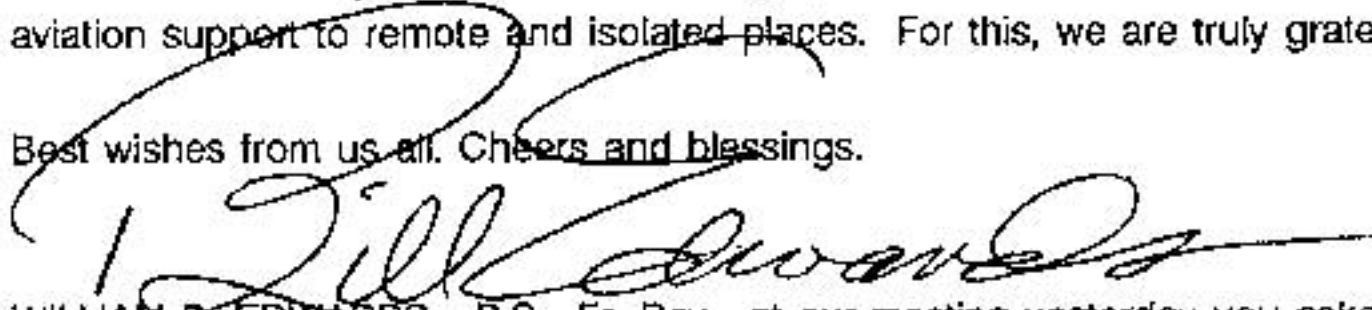
During October last we delivered our 89th utility airplane for humanitarian support service to Irian Jaya. Wings of Hope has been assisting Associated Mission Aviation there for more than 15 years. AMA brings bush air service to benefit more than 200 isolated villages on the western side of New Guinea, in Indonesia. There are no roads linking up these settlements and because of mountainous terrain and vast swampy areas - the airplane is the only and vital link for reliable transportation.

Our 90th airplane is currently under modification and overhaul at our hangar here. It is scheduled for delivery to Zaire later this year. It will replace a similar 6 place Cessna which crashed in northeast Zaire about 2 years ago. We will dedicate this aircraft in memory of the late Bro. Normand Berger who lost his life in that accident.

We continue to recruit highly qualified pilots for volunteer humanitarian service with missionary and humanitarian groups we support. In most cases these pilots must be qualified aircraft mechanics in order to assure the quality of maintenance needed in remote areas. We continue our consultant services aiding non-profit organizations active in our specialized area of aviation support. We also continue our wholesale purchasing assistance for qualified users in the non-profit world. And, we are quite busy in our splendid hanger facilities helping with the preparation and modification of airplanes to serve humanitarian and charitable activities on 4 continents.

Your faithful and generous support encourages us and helps make it possible to continue these important activities bringing radio communication services and aviation support to remote and isolated places. For this, we are truly grateful.

Best wishes from us all. Cheers and blessings.

  
WILLIAM D. EDWARDS P.S. Fr. Ray - at our meeting yesterday you asked Executive Vice President Paul Rodgers and me "what else needs to be done".

WDE/rcf

The impoverished Diocese of Guyana badly needs a utility airplane and operating service. We are sending you additional information describing this appeal.





# MIDWEST REGIONAL

## FLY-IN

Dubuque, Iowa

Monday, Oct. 7, 1991

### ICE HARBOR

Boarding -- 9:00 AM

Departure - 10:00 AM

**COST: \$29.95**



Your best bet on the Mississippi

NAME \_\_\_\_\_

ADDRESS \_\_\_\_\_

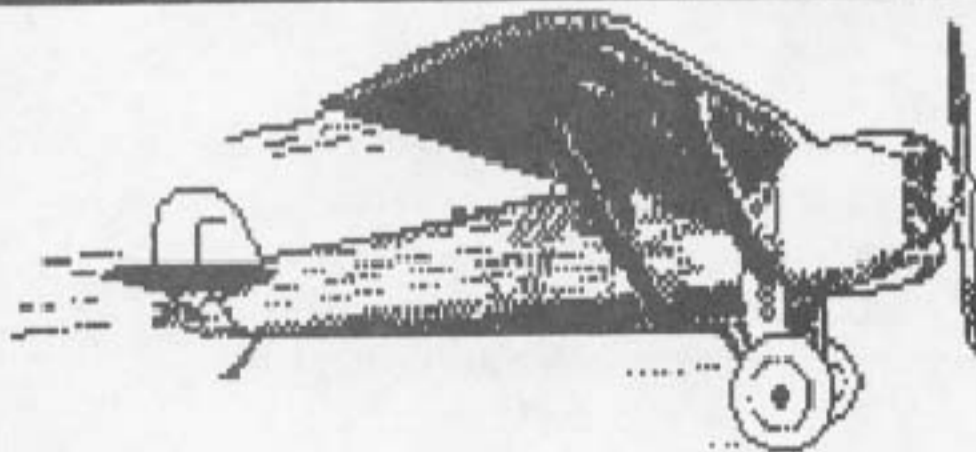
CITY \_\_\_\_\_ STATE \_\_\_\_\_ ZIP \_\_\_\_\_

I will arrive: \_\_\_\_\_ Sunday \_\_\_\_\_ Monday ETA \_\_\_\_\_ AM \_\_\_\_\_ PM

I will arrive by: \_\_\_\_\_ Car \_\_\_\_\_ Plane \_\_\_\_\_ Airline \_\_\_\_\_ Boat

I need overnight accommodations \_\_\_\_\_ Sunday \_\_\_\_\_ Monday

I want to visit the FIELD OF DREAMS \_\_\_\_\_ Yes \_\_\_\_\_ No



Mail Reservations To:

REV. EVERETT HEMANN

LORAS COLLEGE

DUBUQUE, IA 52001

319-582-2603 (H)

319-556-2580 (O)



# BRIEFS FROM HERE AND THERE

From Tom Gillespie, St. Joseph, Minnesota. July 16, 1991.

Dear Father Nemmers,

My brother who is a Dominican working in St. Louis sent me the article on members of the National Association of Priest Pilots.

I also am a pilot and priest and have been a pilot for the past 15 years. I am a Benedictine and a member of St. John's Community in Collegeville, MN. I am pastor of St. Joseph Church in St. Joseph, MN, which is right next to St. John's.

I am currently in a club with nine other members (none are priests) and we share a 1958 vintage 172. I have an instrument rating and a float rating, but don't get much chance to use them around here. But I love buzzing the sky in our 172.

How do I join the Priests Pilots Association?

By the way, I'm a monk, but not a monk-like person. And I did crash-land a plane 7 years ago. I think God was my co-pilot as I did not get hurt.

Editor's Note: I forwarded the requested information and Tom's check arrived on July 26. His membership wings will be included in this mailing.....if I don't forget!

---

From William G. Menzel and his change of address:

Dear Mel,

Sorry I haven't been able to make it to any NAPP gatherings yet. One of these days ---.

If you keep ratings on record, I added multi-engine instrument on April 1 (auspicious date).

I hope to meet some of you guys some day.

ST. JOSEPH CATHOLIC CHURCH

P.O. BOX 101  
NOME, ALASKA 99762  
(907) 443-5527

July 29, 1991

Dear Fr. Mel,

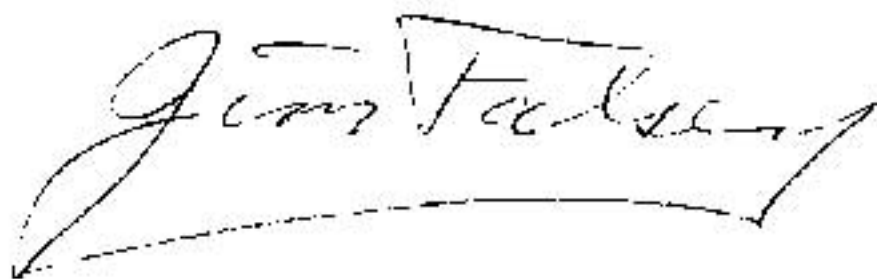
It is great to be back in the air again!

I discovered when I arrived a year ago that you cannot beg borrow or steal a plane in Nome. Unless you own your own plane, you are grounded. For a year I had to content myself with jumping into the right seat whenever I flew commercially to one of my mission parishes. That has now ended. A pilot friend back in Michigan found a nice 1959 Cessna 172 for me, and I bought it. As Bishop Mike Kaniecki said: "Welcome to the ranks of poverty -- as an aircraft owner."

With the assistance of another pilot, I flew the plane from Michigan to Alaska following the Alaskan Highway. What an experience! I plan to use my "new" plane both for pleasure and for flying to two of the mission parishes. The third mission, Little Diomed Island is accessible only by helicopter or boat until the Bering Straits freeze over. Then they build an airstrip out on the ice. But no one ever leaves a plane there over night due to the frequent and violent storms. I'll still fly with the big boys when I go to Diomed.

By the way, I never did make the 7:00 pm. Vigil in Unalakleet and the 11:00 pm. in Nome. The privately owned twin that I was relying on to fly me developed landing gear problems and was grounded. I had to fly commercially, leaving Unalakleet early (no Vigil there) in order to get back to Nome.

Sincerely,



**ADDRESS ALL CORRESPONDENCE TO:**



**REV. MEL HEMANN**

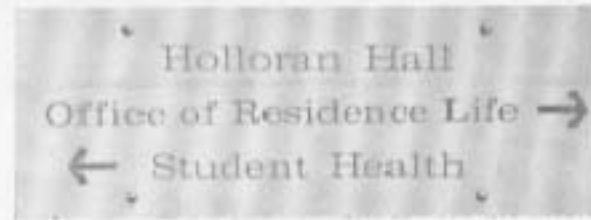
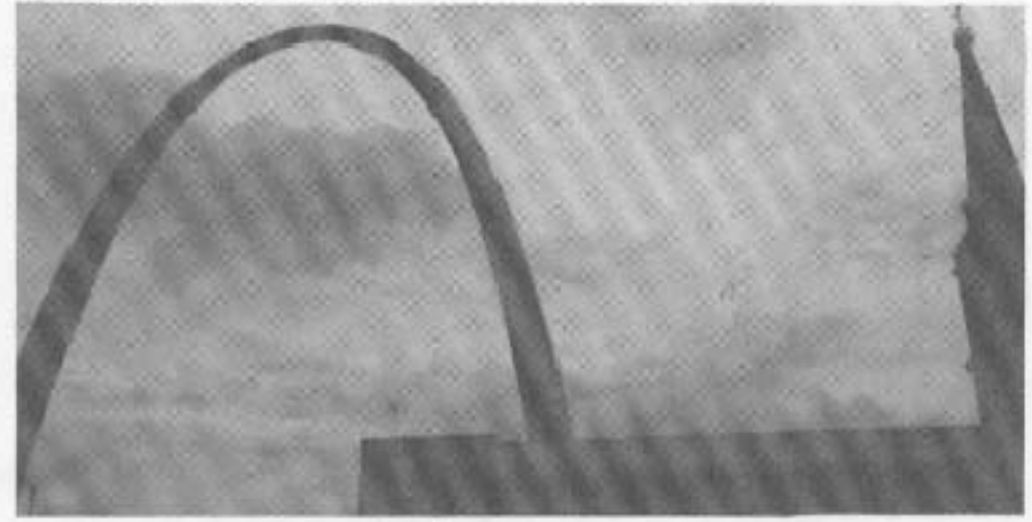
20245 ST. JOSEPH DRIVE  
RICKARDSVILLE, IA 52039

319-552-2233



# 1991

## CONVENTION HIGHLIGHTS

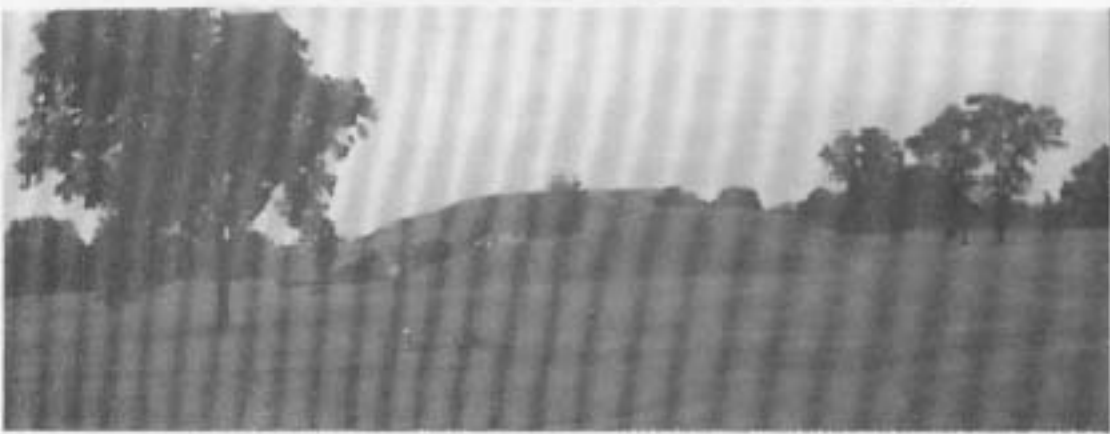
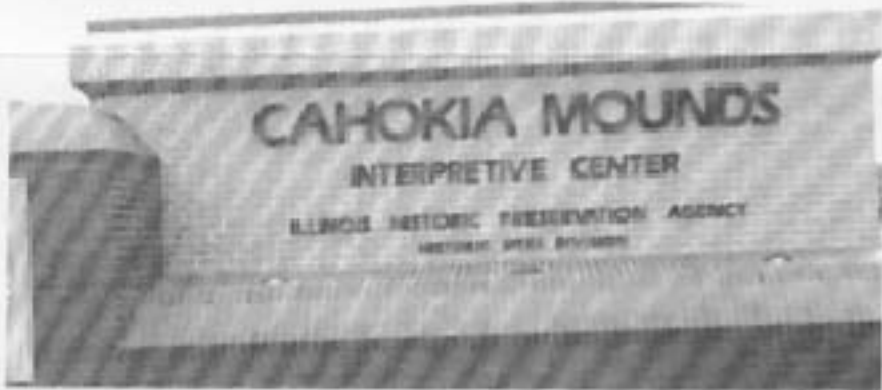




W E L C O M E



Missouri  
Historical  
Society



**HISTORIC SITE  
ANHEUSER-BUSCH BREWERY**  
Founded in 1852

Elberhard Anheuser acquired the brewery in 1869 and was joined in business by Adolphus Busch in 1861. Two innovations by Adolphus in the mid-1870's started Anheuser-Busch, Inc. on its phenomenal growth to becoming the world's largest brewer. First was the introduction of a new and superior beer, Budweiser. Second was the use of pasteurization and refrigeration which transformed Anheuser-Busch from a regional to an international brewer.







## THE ANNUAL MEETING



